

Welcome to South London Gallery

- This is South London Gallery's visual story. We hope this document will help you prepare for your visit. If you have any feedback on this visual story or our access information, please contact:
- mail@southlondongallery.org
020 7300 6120
- On the right is the Main Gallery at 65-67 Peckham Road.



Arriving at the Main Gallery

The Main Gallery has 2 entrances on Peckham Road. Both entrances have step-free access. Peckham Road can be loud and busy.



This entrance takes you to the bookshop. It is usually quieter.



This entrance takes you to the café. It is usually loud and busy.

When you come in

- This is the corridor that leads to the bookshop. It is usually quiet. There is a bench you can sit on.
- On the right, you'll find the bookshop and the lift.
- If you go straight, you'll find the Main Gallery down five steps.



The Bookshop

- This is the Main Gallery bookshop.
- It stocks gifts, books and magazines which are available to purchase.
- There are many small and delicate items on display so please touch carefully.



The Bookshop Desk

This is the bookshop desk. You can ask this person for information and directions.



The Lift

There is a lift in the bookshop.
The lift takes you down to the
Ground floor, where you can
go to the Café, Double Height
Space, Fox Garden, Clore
Studio and Main Gallery.



The Main Gallery

This is the Main Gallery. The exhibitions in the Main Gallery change every 3-4 months and may look different than this photo.

For more information on current exhibitions, please visit our website at <https://www.southlondongallery.org/whats-on/exhibitions>



The Main Gallery

These are some examples of how different the Main Gallery space can look depending on the current exhibition.



Main Gallery Toilets

- There are toilets located off the Main Gallery.
- When you enter the Main Gallery, there is a door to left. The doors can be closed or open. If they are closed, push the door on the right to access the toilets



Main Gallery Toilets

There is 1 accessible toilet on the left. There are more toilets through the right door, which contain 2 urinals and 4 stalls.



The Link Corridor

This corridor links the main gallery to the Double Height Space, Café, Fox Garden, Clore Studio and Orozco Garden.

This space can be loud.



Double Height Space

The Double Height Space has seating for café customers. It is a busy and noisy space. It also has an exit to the Fox Garden.



Café Toilet

This is the café toilet. It is accessible.



Café

You can buy food and drink at the café. It is often busy and noisy.



Fox Garden

- You can exit the Double Height Space through the glass doors into the Fox Garden.
- The Fox Garden is a quieter space. There is outdoor seating for the café. There are also benches you can sit on.
- The Fox Garden path leads to the Clore Studio, Fox Reception and Orozco Garden.



Fox Garden

These are the doors at the end of the Fox Garden, leading you to the Fox Reception, Orozco Garden, and the Clore Studio.



Fox Reception
and Orozco
Garden



Clore Studio



Clore Toilet

This is the Clore Toilet. It is accessible. It is only open when there is an event in the Clore Studio.



Clore Studio

- This is the Clore Studio. It is an event space and hosts school workshops, artmaking workshops, talks, film screenings and more. Depending on the event you are attending, it can look different.
- The Clore Studio is closed to the public unless it is open for a special event.



Clore Studio



An example of a Sunday Spot workshop at the Clore



The Clore also holds screenings, talks and other events

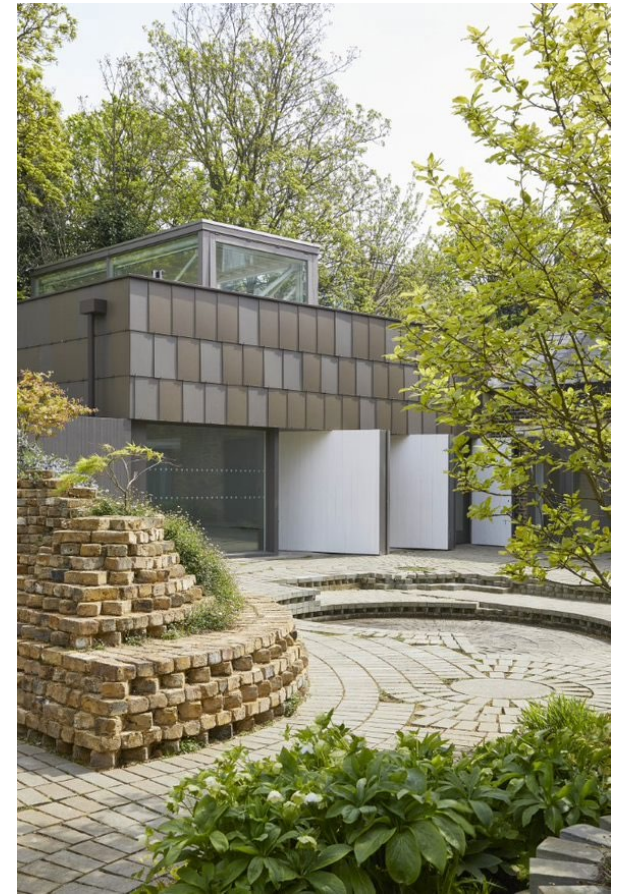
Fox Reception

- This is the Fox Reception. The Fox Reception is only open the weekends. You can go through the Fox Reception to the Orozco Garden.
- This is a quiet space to sit at the weekends.
- There is usually a member of staff sitting in this room if you have any questions or need directions.



Gabriel Orozco Garden

This is the Gabriel Orozco Garden. It is open to the public on weekends from 11am-6pm. You can ask the staff member in the Fox Reception for a garden trail and the best route for step-free access through the garden.



Arriving at the Fire Station

This is the Fire Station at 82 Peckham Road. It is a 100-metre walk from the Main Gallery.



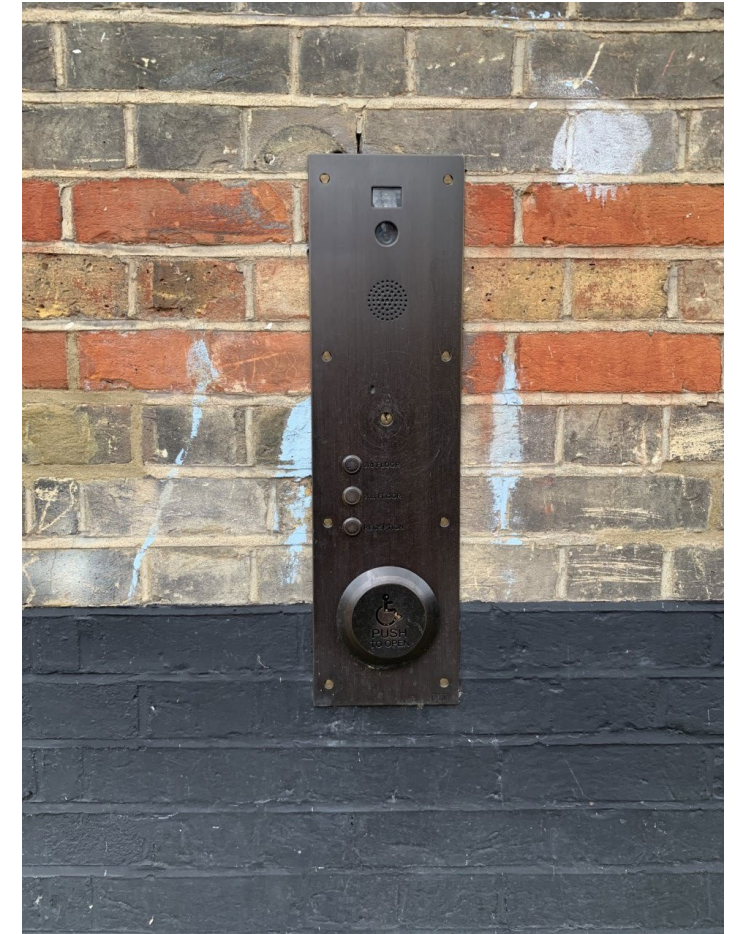
Fire Station Outside Seating Area

We have an outside seating area during warmer months. It can be very noisy due to street traffic. The courtyard cobbled surface can also be irregular when walking. This area is well lit.



Fire Station Entrance

This is the entrance to the Fire Station. The door on the left can be opened by pushing the round button on the panel in the picture on the right.



Entering the Fire Station

- The front entrance door will open inwards and will remain open until you have fully entered the Fire Station.
- There is step-free access throughout the Fire Station.

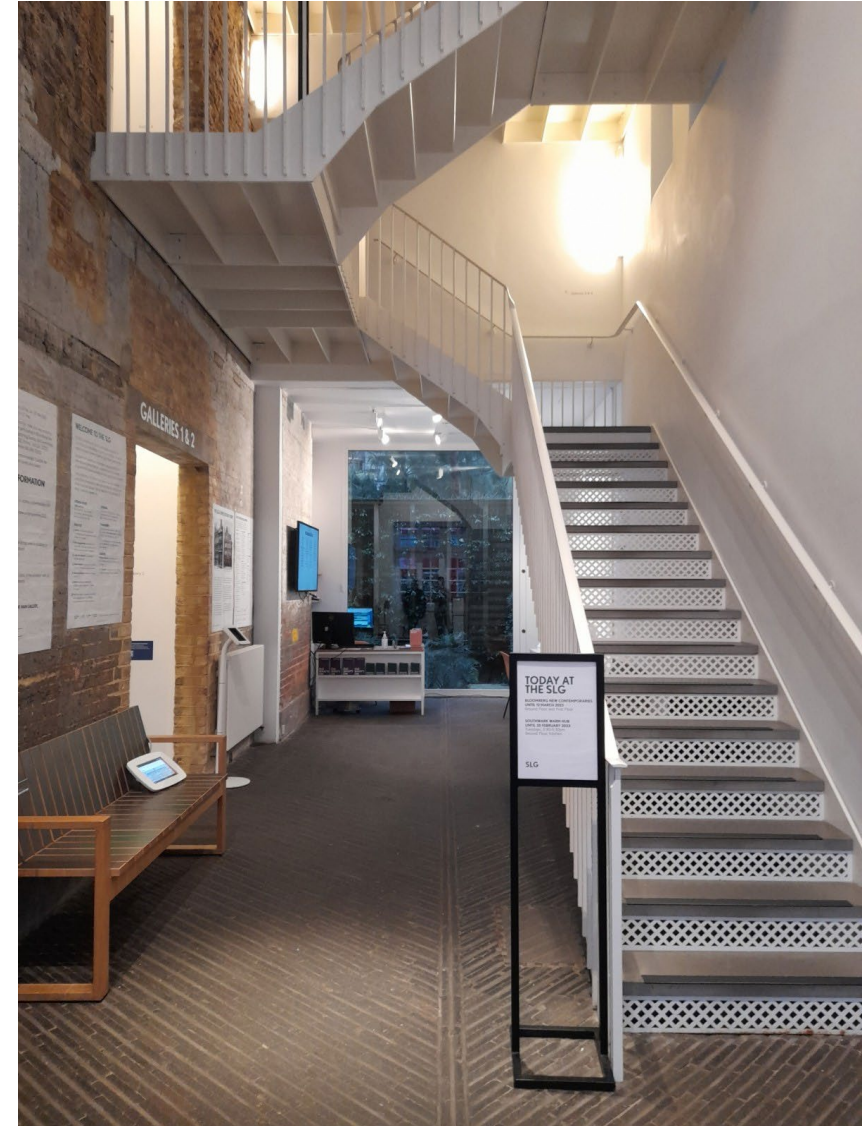


Ground Floor Entrance

The Ground Floor Entrance is usually a quieter area.

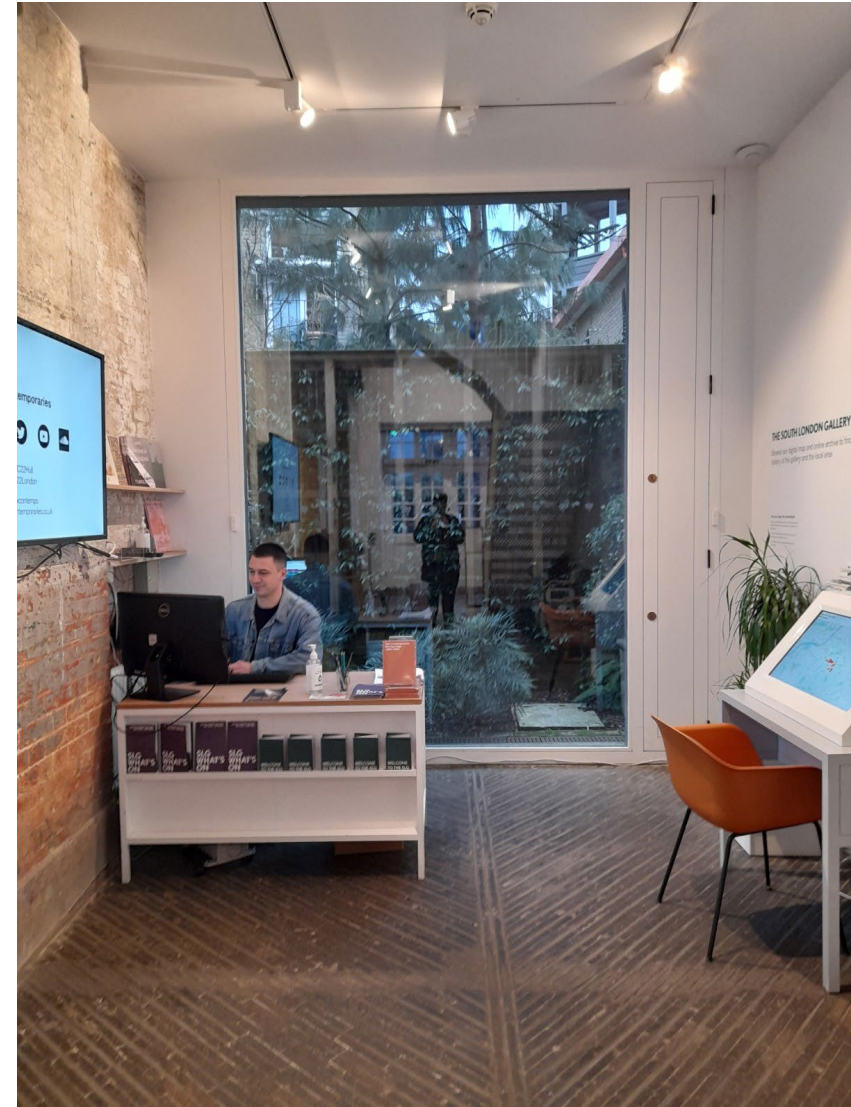
You can find here:

- A member of staff
- Lift
- Galleries 1 and 2
- Stairs
- Bench seating
- Tablets and computer where you can learn about South London Gallery's history and archive



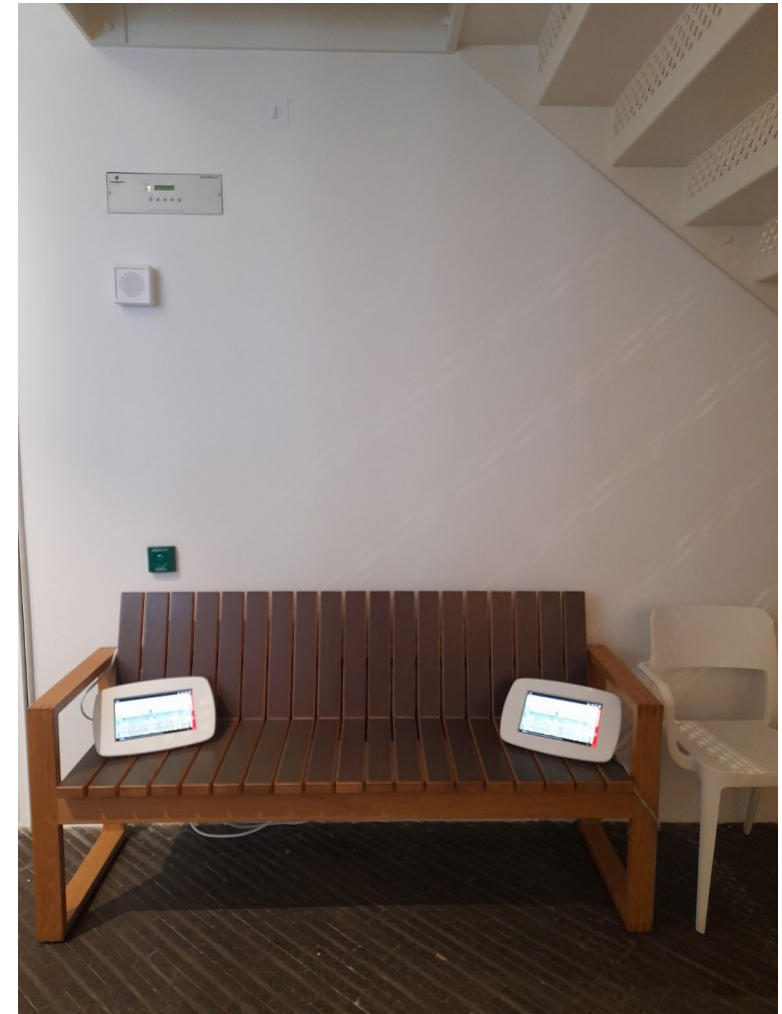
Members of Staff

- There is always a member of SLG staff on the Fire Station Ground Floor.
- You can ask the staff member for information or directions.
- The staff member can help you if you want to borrow ear defenders or need a seat while visiting the Fire Station Galleries.



Ground Floor Entrance – Computer and Tablets

- In the Ground Floor Entrance, you can find a computer and tablets that have information about SLG's archive.
- The computer has an interactive map. You can sit and explore our Archive to learn more about SLG and its local community.
- Please ask our staff member for additional or alternative seating.



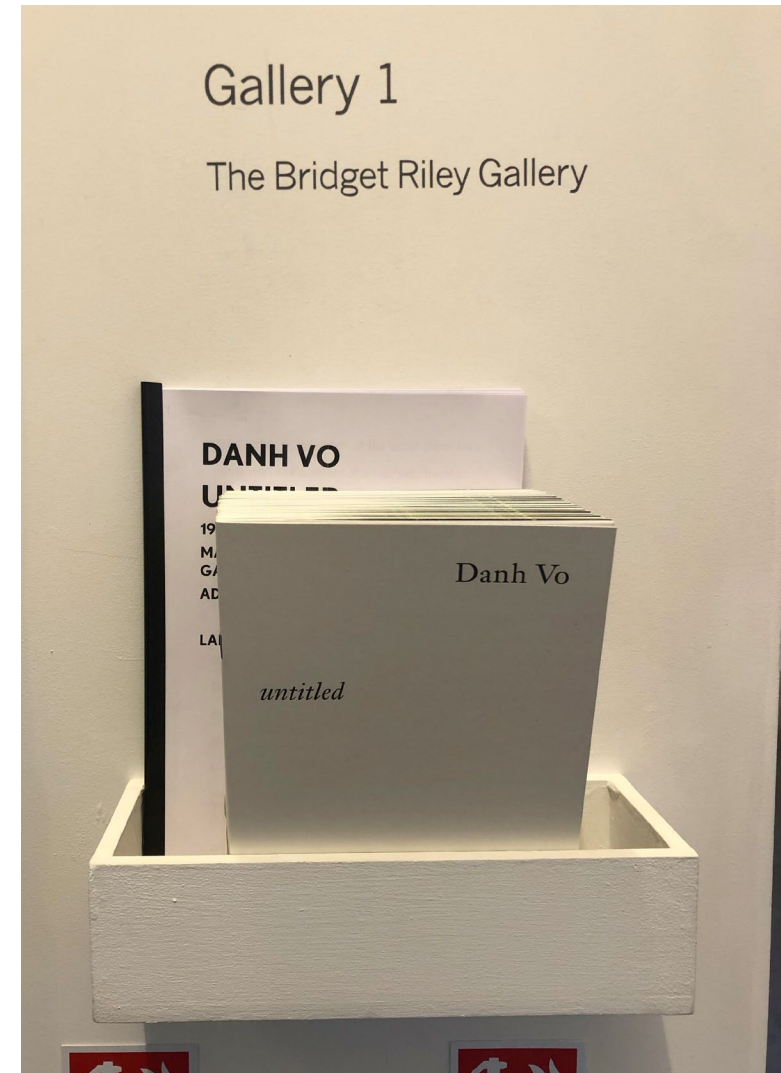
Ground Floor – Galleries 1 & 2

- This is the corridor that leads to Galleries 1&2 and the lift.
- On the left-hand side is Gallery 1.
- On the right-hand side is Gallery 2.



Ground Floor – Galleries 1 & 2

- This is the gallery guide holder outside Gallery 1.
1. You can pick up a gallery guide or large print guide from this holder.
- Additional seating is also available on request.
Please ask a staff member if you need a seat while you're visiting the Fire Station.



Ground Floor – Galleries 1 & 2

These are Galleries 1 and 2.

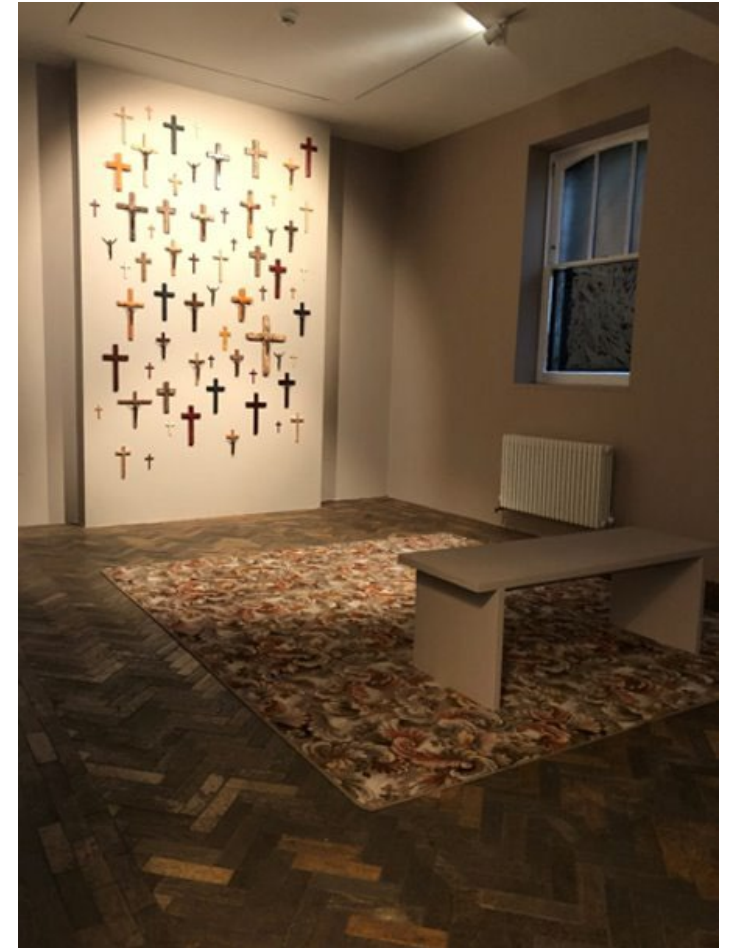
The exhibitions in these spaces change regularly and may not always look or sound the same as these pictures.

You can learn more about our current exhibitions

at: <https://www.southlondongallery.org/whats-on/exhibitions/>



Temporary exhibition in Gallery 1



Temporary exhibition in Gallery 2

The lift (outside)

This is the view of the lift from the ground floor. You can use the lift to go to the 1st, 2nd and 3rd floors where you can find:

- Accessible Bathrooms (Floors 1,2,3)
- Galleries 3 and 4
- Kitchen and Attic



The lift (inside)

This is the inside of the lift. The lift will take you to:

- 1st Floor – Toilets, Gallery 3 & 4
- 2nd Floor – Toilets & Kitchen
- A yellow panic button is located on the panel in case of emergency

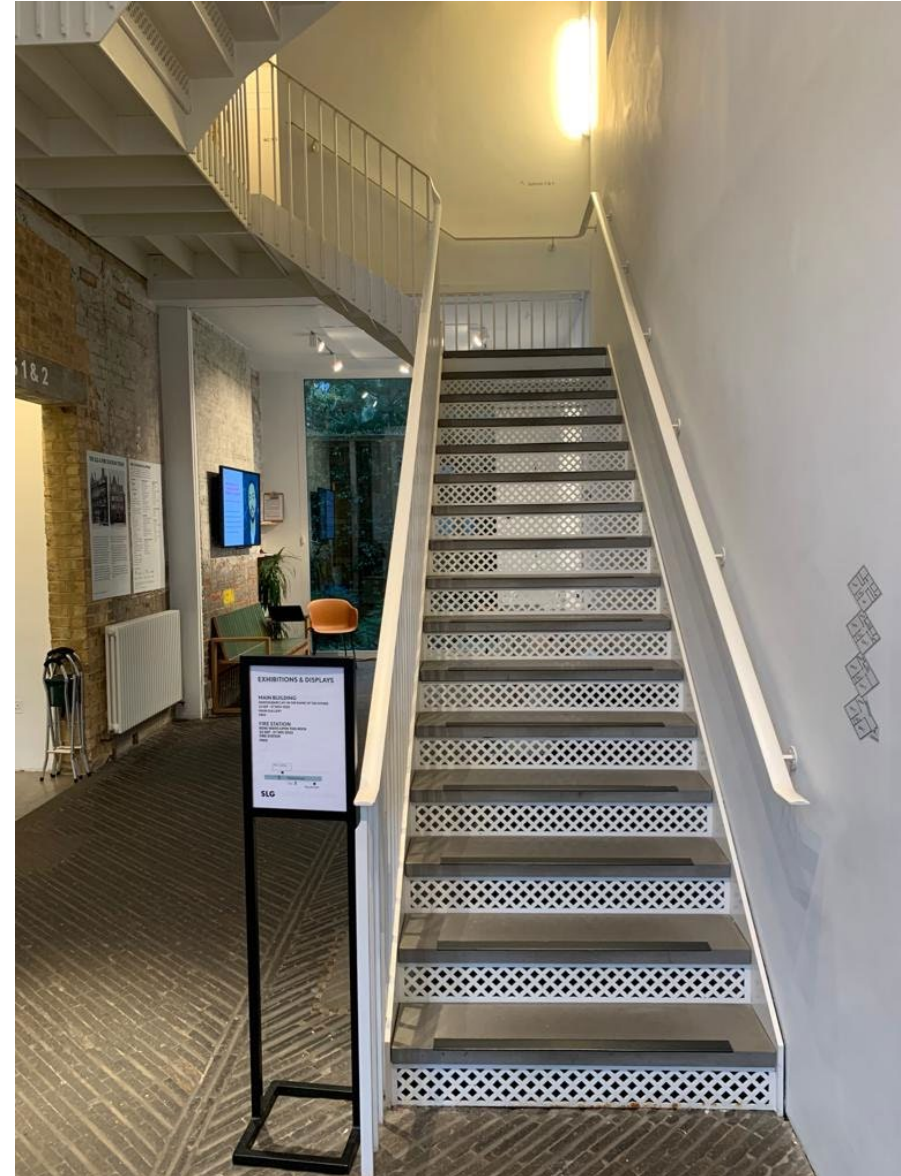


The Staircase

- Here are the stairs on the ground floor.

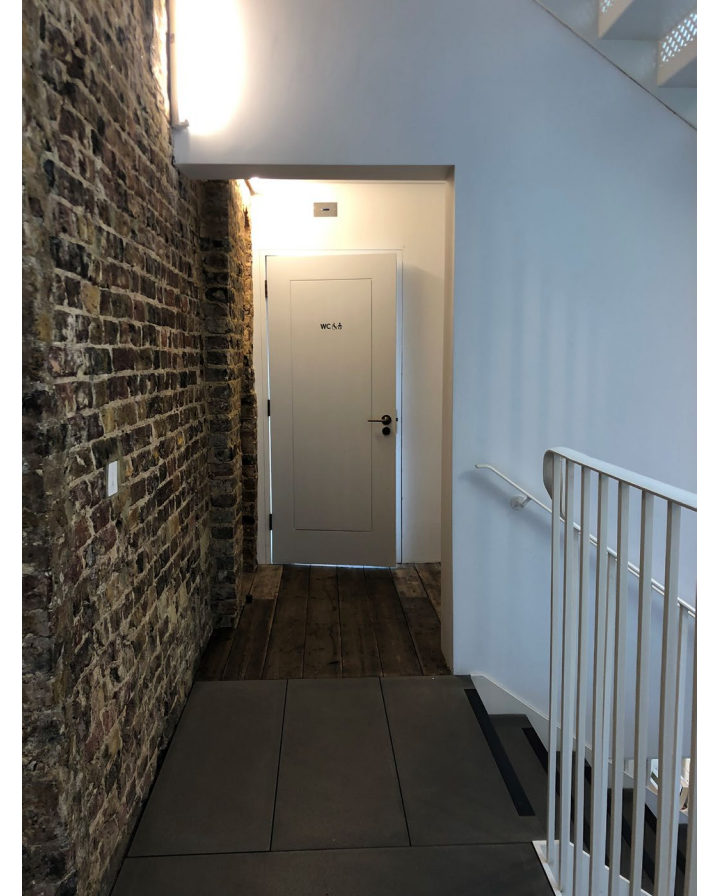
The stairs take you to: 1st, 2nd and 3rd
Floor.

- There is a handrail on either side of the staircase.



1st Floor – Toilets

- There are toilets located on the 1st floor landing. There is 1 accessible toilet and 1 toilet stall.
- The lights in the 1st floor bathrooms are automatic. The other bathrooms have switches.
- None of the toilets have hand dryers.
- All toilets are gender neutral.



First Floor Landing & Staircase

- 1st Floor landing takes you to the two toilets, Gallery 3 and 4 and Lift.
- The staircase leads you to 2nd Floor. The 2nd Floor is usually closed to the public unless it's for a special event.



1st Floor - Galleries 3 & 4

This is the 1st Floor landing outside the lift. This is where you can enter galleries 3 & 4. There is usually a member of SLG staff stationed on the 1st Floor.



Galleries 3 & 4 (inside)

- These are Galleries 3 & 4 inside.
- The exhibitions in these spaces change regularly and may not always look or sound the same.
- If you would like more information on the current exhibition before your visit, please contact foh@southlondongallery.org or call 020 7703 6120.



2nd Floor – Landing and Toilet

This is the 2nd Floor landing. The 2nd Floor is usually closed to the public unless it's for a special event.

- The toilet on the 2nd Floor is accessible.
- There are no hand dryers in the toilets.
- All toilets are gender neutral.



2nd Floor – Kitchen

The Kitchen is usually closed except for special events. This is a quiet space and you can request access if it is possible by asking a member of staff.

This space can be bright and sunny.



3rd Floor – Toilets



This is the 3rd Floor toilet. This is not usually accessible to the public but you can request access from a member of staff if all other toilets are in use.

- This is an accessible toilet.
- There are no hand dryers in this toilet.
- All toilets are gender neutral.