



Easy
Read

SLG

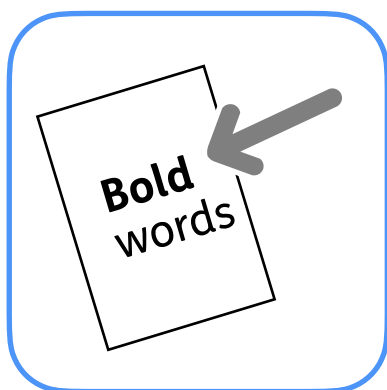
Bloomberg New Contemporaries Art Exhibition

A guide



Contents

Introduction.....	3
The main gallery	5
Gallery 1	8
Gallery 2	9
Gallery 3	10
Gallery 4	12
Events.....	13
Making our show accessible	19
For more information	22



In this Easy Read document, hard words are in **bold**. We explain what these words mean in the sentence after we have used them.



Some words are [blue and underlined](#). These are links that will go to another website which has more information.

Introduction



The South London Gallery has an **exhibition** that shows new art - it is called Bloomberg New Contemporaries.

An **exhibition** is when art is displayed and shown for an audience.



Well-known artists have chosen 46 new artists to be in the exhibition.



The art includes:

- Paintings.



- Photographs.



- Films or videos.



- Materials - like cloth, sewing and weaving.

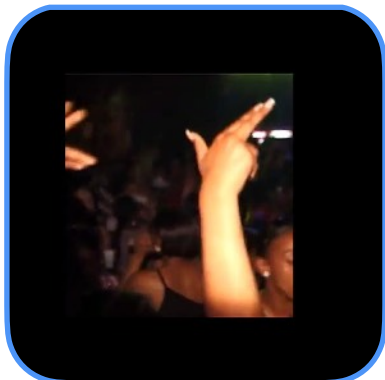


- Sculptures - these are objects that have been made by an artist.



- Large pieces of art that take up a lot of space in an art gallery.

The main gallery



In the main gallery, there is:

- A film by bill dagg.

This looks at how we think about sound and rhythm.



- 2 sculptures by Rosalie Wammes.

These are about how we communicate with each other.



- Some photographs by Catarina Ludovico.

These look at our inner self.



- A painting by Ciara Otuokere.

This includes some pottery in the shape of a telephone.



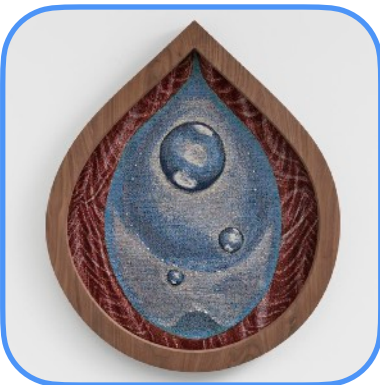
- A film by Akinsola Lawanson.

This looks at the Ifá religion in West Africa.



- Paintings by Danying Chen.

These look at traditional Chinese gods.



- Pieces of sewing by Charlotte Edey.

These are little pictures looking at other worlds.



- Art made from wool, threads and material by Theresa Weber.

This sculpture is made of layers of different materials.



- A large piece of art by Meitao Qu.
This looks at what we have lost by building modern cities.



- A model by Tom Bull.
This looks at the links between the countryside and the modern world.



- A large model by Katie Surridge.
She wants this model to be used as a place that people can meet, talk and share ideas about the past.



- Drawings by Dawn Wilson.
These drawings are of people and places - at church, on the street and listening to music.

Gallery 1



In Gallery 1, there is:

- A film by Yukako Tanaka.

This film looks at time and memory.



- A large sculpture by Josh Clague.

This piece of art is about how we feel after someone has died.



- A sculpture by Eva Hopper.

This sculpture makes us think of a time in the past.

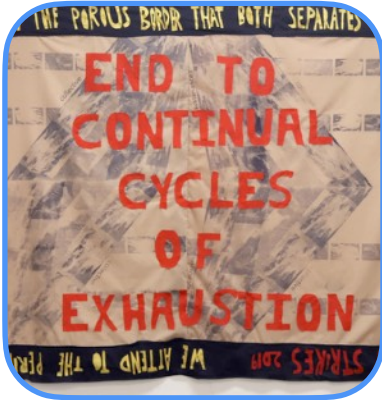


- A sculpture by Nicole Sheppard.

This sculpture uses **recycled** materials. **Recycled** means they have been used more than once.

Gallery 2

In Gallery 2, there is:



- A banner by Kneed.

Kneed are 2 artists: Ishwari Bhalerao and Leonie Rousham.

This looks at ways we are stopped from doing what we want by working.



- Paintings by Deborah Hobson.

These paintings are of important and less known Black people.



- A piece of art by Beverly Onyangunga.

This artwork looks at how children are forced to find and dig for metals in the Congo - this is called mining.



- Art made by knitting by Lou Baker.

This artwork shows how things made from materials can come apart and change their shape.

Gallery 3

In Gallery 3, there is:



- A piece of art by Andre Williams.

This is a room painted in bright colours.



- Lightboxes by Mehmil Nadeem.

These photographs look at childhood memories and how they affect what is happening now.



- A hand drawn cartoon film by Ashton Blyth.

This cartoon film looks at gender and how **trans** people feel.



Trans means people who have a different gender from the one they were given when they were born.



- Sculpture by Yun Kim.
This sculpture looks at what is real
and what is not real.

Gallery 4

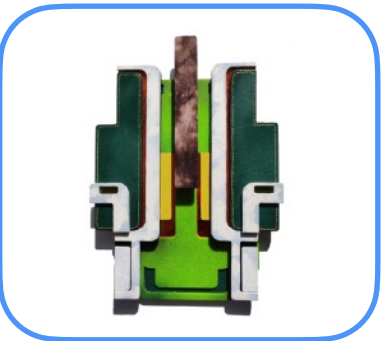
In Gallery 4, there is:



- A **Kimono** by Emma Todd. A Kimono is a Japanese piece of clothing.

This **kimono** is made from old tracksuits.

It helps us think about how we all come from a mixture of backgrounds.



- A film by Kialy Tihngang.

This film looks at history by looking at types of equipment that we don't use anymore.



- A painting by Winnie Hall.

These paintings are fun. They look at everyday life.



- A sculpture by Francesca Dobbe.

These sculptures take everyday things and use them in a new way. They make us think about moving slowly.

Events

Here are some fun art events that you might like to come to.

Sunday 29 January and Sunday 26 February 2023



This event gives you the space and time to play and make things yourself.



This event is:

- For families and free to take part.



- Led by our Art and Play team.



- At South London Gallery.

Wednesday 25 January 2023 6:30pm to 8:30pm



This is a chance to find out about artists supporting each other. Bring a piece of your art to talk about.

This event is:



- Run by Chloe Cooper.



- £6, or £4 if you are a member, a student, over 60, retired, do not have a paid job or are disabled.



- At South London Gallery.

Wednesday 8 February

6:30pm to 8:30pm



This is a discussion about getting your writing printed.

This event is:



- Run by Pelumi Odubanjo and Sofia Niazi.



- £6, or £4 if you are a member, a student, over 60, retired, do not have a paid job or are disabled.



- At South London Gallery.

Thursday 2 March 2023

6pm to 7pm online



This is a discussion about how to make art that is better for the world around us.

This discussion is:



- Free to take take part in.



- Online.

Saturday 4 March 2023

2pm to 5pm



This is a chance to come and look at art that is better for the world around us.

This event is:



- £8, or £6 if you are a member, a student, over 60, retired, do not have a paid job or are disabled.



- At South London Gallery.

Saturday 11 March 2023 2pm to 6pm



This is an event that looks at sound and art in our exhibition.

This event is:



- Being run by several of the artists.



- Free.



- At South London Gallery.

Making our show accessible



Accessible means it is easy to use and suitable for people with different needs.



All our rooms have good lighting and are not noisy.



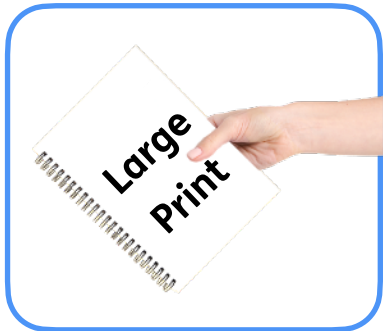
You cannot touch any of the artwork.



There are 2 sculptures in the main gallery which have a mechanical sound.



Some TV screens have headphones to listen to the artwork.



We can give you a large print version of this guide to the exhibition.



All the films have subtitles.



It would take you 1 hour 30 minutes to watch all the films in this exhibition.



You can watch all the films online at:
www.platform.newcontemporaries.org.uk



There is somewhere to sit to watch the films that last longer than 10 minutes.



There are seats that you can pick up and take around with you. You can find these seats just outside the gallery spaces. You can ask someone for help if you want.



We can lend you ear plugs, ear defenders, magnifying glasses and wheelchairs if you want.



You can get more information about access at:

www.southlondongallery.org/your-visit/access

For more information



You can look at our website here:
www.platform.newcontemporaries.org.uk



Or use this **QR code**.

A **QR code** lets you go straight to the website using your mobile phone.



If you need more information please contact us by:

- Post:
South London Gallery
Main Building: 65–67 Peckham Road
London
SE5 8UH



- Phone: 020 7703 6120
- Email: mail@southlondongallery.org

This Easy Read information has been produced by easy-read-online.co.uk