

SLG

APPLICATION PACK FOR EMERGING CURATOR FELLOW

Closing date:
Wednesday 15 July 2026, 12pm



Christina Kimeze, *Between Wood and Wheel*, 2025. Photo Andy Stagg



Leonardo Drew: Ubiquity II, South London Gallery, 2025. Photo: Andy Stagg

HOW TO APPLY

HOW TO APPLY

1. Please **visit** <https://www.southlondongallery.org/jobs/> to download an Applicant Details Form and Application Form.
2. Please **email both completed forms to:** recruitment@southlondongallery.org
3. Please also complete the anonymous, online equal opportunities monitoring form here: <https://www.surveymonkey.com/r/F8LVGC2>

The closing date for applications is **Wednesday 15 July, 12pm**. Applications received after that time cannot be considered.

An online information session about the role will take place on **Wednesday 24 June, 6pm**. To register, please visit this [link](#).

If you have any queries regarding the process or the role please contact our recruitment team at recruitment@southlondongallery.org

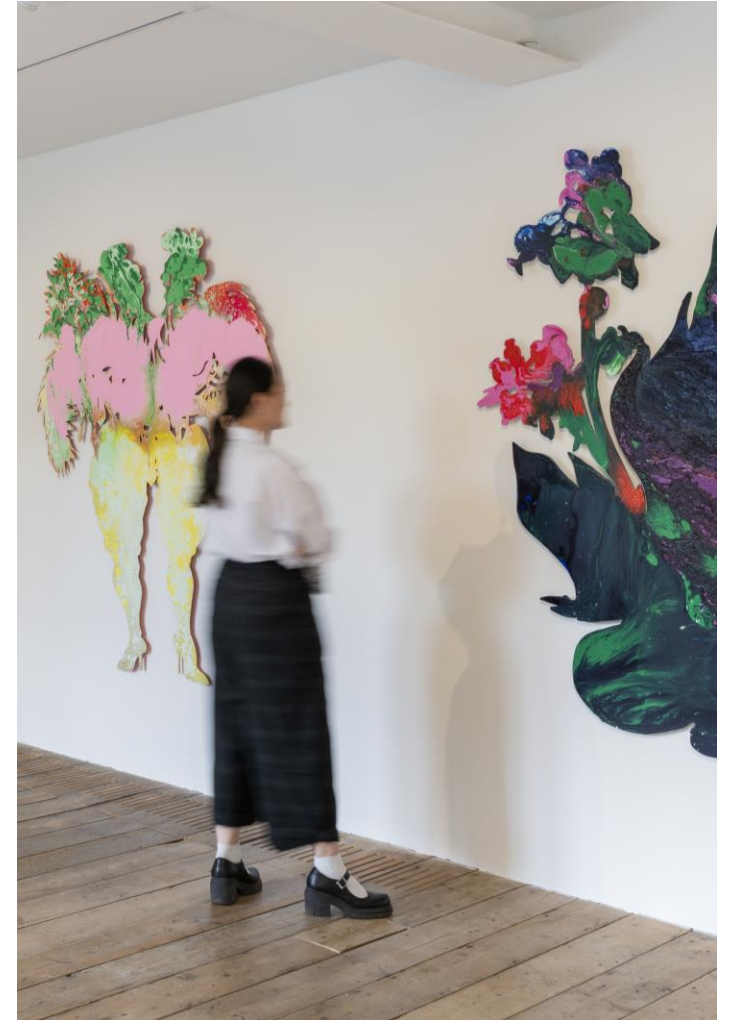
ABOUT

EDI

WHY SLG

JOB DETAILS

CANDIDATE



Firelei Báez: Sueño de la Madrugada (A Midnight's Dream), 2024.
Photo: Above Ground



SOUTH LONDON GALLERY
ART EVENTS
CAFE
SHOP
GARDENS
FREE ENTRY

THE SS MORE EWARDS
SOUTH LONDON ART GALLERY
157-159 AUSTIN STREET

LAGOS
5 HILL
AND 3 REFUGIUM
159

COFFEE
FOOD
ITALY

HOW TO APPLY

ABOUT

EDI

WHY SLG

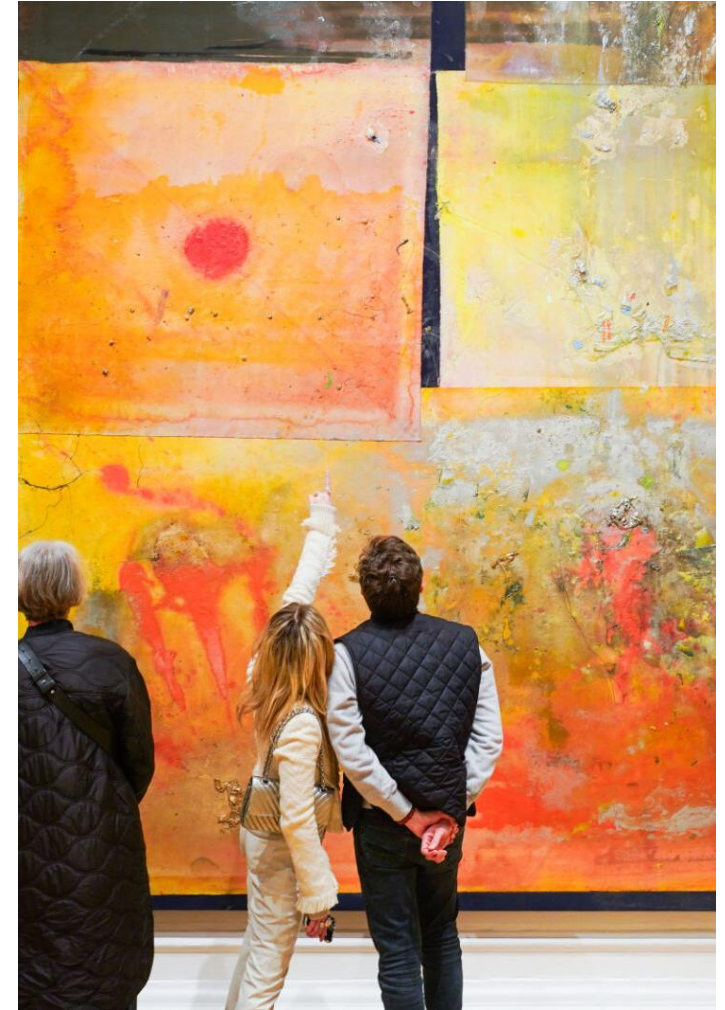
JOB DETAILS

CANDIDATE

ABOUT THE SOUTH LONDON GALLERY

The South London Gallery (SLG) is a locally, nationally and internationally recognised centre for contemporary art with an acclaimed and award-winning education programme.

Founded in 1891 as a purpose-built gallery, the original site has expanded to include the Clore Studio and a café (since 2010); an artist-designed garden (opened in 2016); the Fire Station (opened in 2018); and Art Block, a space for local children and families on Sceaux Gardens estate.



Frank Bowling, Skid, 2024. South London Gallery, Photo: George Groves.

HOW TO APPLY

ABOUT

EDI

WHY SLG

JOB DETAILS

CANDIDATE

ABOUT THE SOUTH LONDON GALLERY

“The gallery has a rigorous international programme, but still feels very local. It is very much about the area and the people that live around it.”

Ryan Gander, Artist

The year-round exhibitions programme showcases the best in international contemporary art, complemented by an events programme for people of all ages and interests. The gallery’s emphasis is on presenting new work by British and international artists, often by those who have rarely or never had a solo show in a London institution. Group shows bring together works by established and lesser-known British and international artists, whilst an ongoing residency programme provides opportunities for artists to develop new work and exhibit at the SLG.



South London Gallery, Photo: Andy Stagg.



THE PASSMORE EDWARDS
SOUTH LONDON ART GALLERY
AND TECHNICAL INSTITUTE

SWIFT

LAGOS, PECKHAM, REPTON
5 JUL - 29 OCT 2023

HOW TO APPLY

ABOUT

EDI

WHY SLG

JOB DETAILS

CANDIDATE

EQUITY, DIVERSITY AND INCLUSION

We particularly encourage and welcome applications from people from backgrounds which are underrepresented in museums and galleries, including people from low-income backgrounds, people from Black, Asian and ethnically diverse backgrounds and disabled people.

The SLG **fosters varied perspectives and experiences**, encouraging open conversations and active listening practices. We believe everybody is entitled to **feel welcome and safe** at the SLG and confident to express their authentic selves. We are committed to achieving diversity across our staff, board, programmes and audiences, to reflect society.

We aim to create a working environment that enables us to challenge structures and practices, to ensure that diversity is at the forefront of our organisation. We strive to be **fully inclusive and to proactively counter discrimination**.

After interviews, if it is necessary to select between candidates of equal merit, where known, we may select a candidate from a group that is underrepresented within our workforce.



Emerging Conversations, 2025. South London Gallery. Photo: Betty Zapata

WHY WORK AT THE SLG

HOW TO APPLY

ABOUT

EDI

WHY SLG

JOB DETAILS

CANDIDATE

1. Competitive salary with a yearly review

2. 26 days annual leave pro rata plus bank holidays – increasing after 5 years' service

3. Union recognition with BECTU

4. Discounts at the SLG's bookshop and cafe

5. Access to discounts at a range of high street retailers and supermarkets

6. Access to free and discounted events including theatre, concerts, comedy and sporting events

7. Cycle to work scheme

8. 6% pension employer contribution

9. Wellbeing support – Employee Assistance Programme & trained Mental Health First Aiders



HOW TO APPLY

ABOUT

EDI

WHY SLG

JOB DETAILS

CANDIDATE

JOB ROLE

Job Title:	Emerging Curator Fellow
Duration:	Fixed term – 15 months
Hours:	Full time, 35 hours per week
Salary Scale:	£28,852
Pension:	6% employer pension contribution
Holiday:	26 days plus bank holidays
Reports to:	Head of Programme

**Appointments are made at the start of the salary scale, with annual pay progression through the scale based on satisfactory performance. The pay scale is reviewed annually in the light of cost of living and operational budgets.*



Nairy Baghramian: Jumbled Alphabet, 2024. South London Gallery.
Photo: Jo Underhill

HOW TO APPLY

JOB ROLE

ABOUT

Launched in 2020, the Deutsche Bank x Frieze Emerging Curator Fellowship supports Black and global majority heritage curators through full-time, paid fellowships within leading arts organisations.

EDI

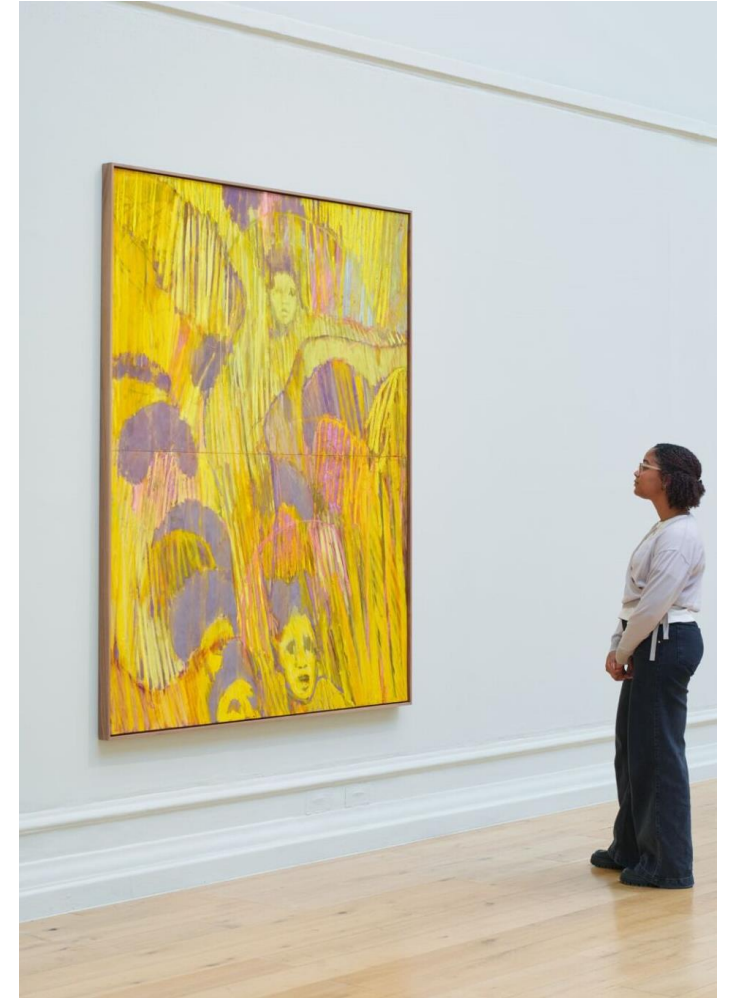
The Emerging Curator Fellowship is a 15-month full time trainee-level role based at South London Gallery. The candidate will gain comprehensive experience across all aspects of exhibitions and events work in a public institution, including research, programming, delivery, and archiving.

WHY SLG

The Emerging Curator Fellow supports the work of the Programme Team and Director by providing administrative assistance, while also offering the opportunity to undertake training and develop their own curatorial research. As part of the fellowship they will receive mentoring from the Director and Head of Programme, support with travel and research, and be connected to networks through the SLG Curatorial and Development teams.

JOB DETAILS

CANDIDATE



Christina Kimeze: Between Wood and Wheel, 2025. South London Gallery.
Photo: Andy Stagg



South London Gallery Bookshop. Photo: Dan Weill

HOW TO APPLY

ABOUT

EDI

WHY SLG

JOB DETAILS

CANDIDATE

KEY TASKS AND RESPONSIBILITIES

Exhibitions

- Support the research, development, and delivery of temporary exhibitions, working collaboratively with internal colleagues.
- Research solutions for the production and fabrication of new artworks in collaboration with the Artist, Curator, Registrar/Producer, and Gallery Technical Manager.
- Assist the Curator with preparing presentations to brief internal departments throughout the development of each exhibition, ensuring teams are provided with relevant research materials.
- Draft correspondence to supporters, artists, and partners in collaboration with the Programme Team.
- Develop exhibition interpretation in conjunction with the Curator; liaise with the Communications Department on content and style; and draft and proof exhibition labels and interpretative texts as required.
- Support the Technical Manager and Registrar/Producer during installation periods, including assisting with condition reporting and related tasks.
- Assist the Lead Curator in hosting artists and partners during installation periods.
- Monitor the physical condition of exhibitions to ensure they remain in good order and are fully operational during opening hours, and oversee the daily condition checklist.

Events

- Research, prepare, and deliver exhibition tours for a range of audiences, including internal stakeholders, the general public, members, and supporters.
- Research and identify participants for the events programme.
- Assist in the planning and delivery of events, including drafting event copy, hosting, and coordinating Front of House staffing. This includes completing event and image rights forms, managing guest lists, monitoring booking levels, and overseeing room set-up.
- Source materials and equipment required for events.

Archive

- Provide access to the SLG archive and support the organisation of archival materials.
- Research and update the SLG interactive map.
- Maintain and update the exhibitions and collections pages on the website.
- Manage permissions for the SLG picture archive and track image requests.
- Work with the Digital Marketing Manager to make archival stories accessible online.
- Collaborate with Southwark Archives and Heritage on projects as required.

HOW TO APPLY

KEY TASKS AND RESPONSIBILITIES

ABOUT

EDI

WHY SLG

JOB DETAILS

CANDIDATE

Administration

- Process invoices in coordination with the Accounts team.
- File and track expenses in collaboration with Programme Team staff.
- Support the Director with diary management, including scheduling meetings and events.
- Collate internal SLG Board reports for review by the Programme Team.
- Track upcoming exhibitions across the sector and monitor RSVPs for opening events.
- Act as a point of contact for the team during periods when staff are travelling or overseeing installations.

General Responsibilities

- Be inclusive and operate in accordance with the SLG's access and diversity, safeguarding, employment, health and safety, equal opportunities and other practices, policies and procedures;
- take responsibility for own administration, devise and implement appropriate processes and procedures to achieve agreed objectives;
- attend weekly staff meetings, report on relevant areas of work and disseminate information as required;
- maintain a commitment to training and professional development;
- be an advocate and effective representative of the SLG at private views, previews, other evening and weekend events as appropriate and at external professional events;
- have the ability to work evenings and weekends, for which TOIL (time of in lieu) will be given;
- act as a keyholder as appropriate and required;
- and undertake other duties as may be reasonably required.



PERSON SPECIFICATION

This is a guide for the kind of skills and experience we would like you to have. We are looking for a candidate that meets the majority of the criteria, but you don't have to meet all the criteria to be considered.

Knowledge, Experience and Skills

1.

Interest in contemporary art and culture

2.

Experience of research

3.

Experience of event planning or delivery

4.

Experience of financial administration

5.

Experience of public speaking with confident verbal communication

6.

Strong written communication skills

HOW TO APPLY

ABOUT

EDI

WHY SLG

JOB DETAILS

CANDIDATE

PERSON SPECIFICATION

This is a guide for the kind of skills and experience we would like you to have. We are looking for a candidate that meets the majority of the criteria, but you don't have to meet all the criteria to be considered.

Knowledge & Experience

7.

Excellent attention to detail in all aspects of work

8.

Ability to work on multiple projects simultaneously and meet deadlines

9.

Committed to personal development

10.

A demonstrable commitment to equity, diversity and inclusion

HOW TO APPLY

ABOUT

EDI

WHY SLG

JOB DETAILS

CANDIDATE